



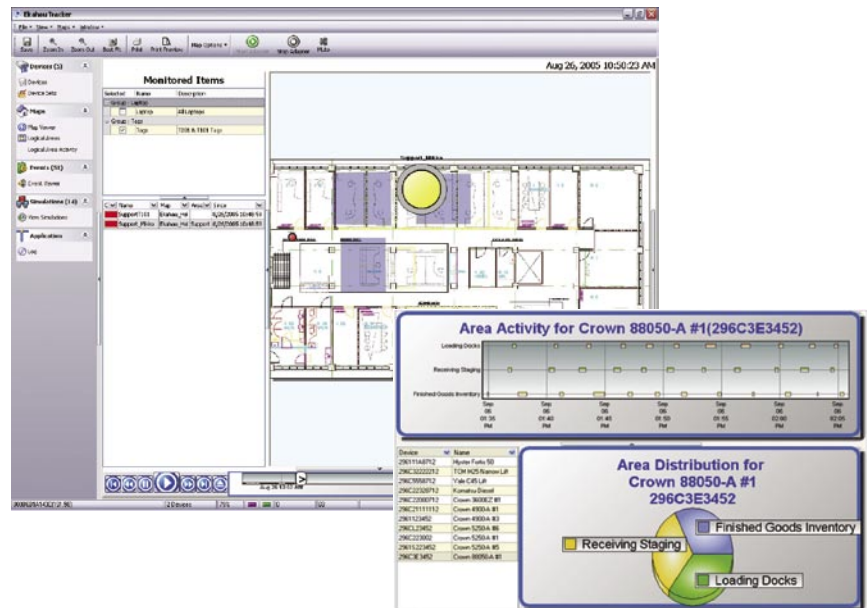
Ekahau Tracker

Ekahau Applications



Ekahau Tracker

- Monitor the location of assets and people in real-time
- Alert appropriate personnel to situations requiring attention
- Use historical tracking data to optimize operational processes
- View activity history to investigate interactions
- Monitor events and activities from your desk or remotely via email, SMS or paging



Real business value

Ekahau Tracker is an innovative application for tracking assets and people. It transforms location data into actionable information and streamlines many business operations, from maintenance of medical equipment to alerting security personnel of the prohibited location of a person or high value item. Ekahau Tracker logs and displays the location history of the tracked items and creates statistical and graphical reports that can be used for reviewing executed tasks or analyzing the efficiency of operations.

Powerful user interface

The core of the Ekahau Tracker is a powerful user interface that condenses meaningful information for the end-user in an easy to understand textual and graphical format. The tracked objects can be grouped hierarchically into unlimited numbers of logical groups, making management and viewing of objects easy. The included reporting package provides out-of-the box reports on device activity and space utilization. The unique playback functionality allows viewing of the locations and paths of specific devices over time. The user interface functionality may also be tailored for specific user groups.

Dispatching external alarms

The power of the Ekahau Tracker is not limited to the desktop user. The event management mechanism can trigger messages to external applications or devices when predefined event conditions are met. For example, the system can be configured to send an email or SMS whenever a high value item leaves a room or building floor. The event may also be dispatched to certain users via pop-up screens with graphical and audible alerts.



Pop-up screen alarm

Scaleable from Desktop to Enterprise

Ekahau Tracker comes with three different versions Lite, Pro and Enterprise. The Lite version includes everything needed for the basic tracking and managing of tracked objects. The Pro version adds the capabilities of advanced reporting, alerting and playback functionalities. The Enterprise version allows users to deploy the Ekahau Tracker Pro functionality to the entire organization using a web-based architecture. Since all versions use the same data format, migration from one version to another is straightforward and brings all configurations and previously populated information from one version to another.

Part of Ekahau RTLS Solution

Ekahau Tracker is an integral part of the Ekahau RTLS (Real Time Location System) Solution. Ekahau RTLS is a complete end-to-end solution for accurate real-time tracking of people and assets in hospitals, warehouses, manufacturing and industrial plants. Ekahau RTLS can accurately track any Wi-Fi enabled device such as a laptop or PDA as well as people or assets carrying Ekahau WiFi tags. As the solution does not require any additional infrastructure other than a standard 802.11 network, its implementation is straightforward and cost-effective.

Ekahau	Tracker Lite	Tracker Pro	Tracker Enterprise
Device Tracking	•	•	•
Device Set Management	•	•	•
Location History	10 last •	•	•
External Alarms		•	•
Reports	Basic	•	•
Tailoring of User Interface		•	•
Web Interface			•

Technical Specification

Ekahau Tracker Lite

- Supported Platforms: Windows XP, 2000
- Memory Requirements: 256 MB main memory, 25 MB Disk Space

Ekahau Tracker Pro

- Supported Platforms: Windows XP, 2000
- Memory Requirements: 512 MB main memory, 30 MB Disk Space

Ekahau Enterprise

- Supported Platforms: Windows XP, 2000
- Memory Requirements: 512 MB main memory, 40 MB Disk Space, space for database
- Supported browsers: Microsoft IE 5.5 or higher, Pocket Internet Explorer (Pocket PC 2002, 2003)



www.ekahau.com
 sales@ekahau.com
 info@ekahau.com

West Coast Ekahau, Inc.
 12930 Saratoga Avenue,
 Suite B-9
 Saratoga, CA 95070
 Tel: 1-866-4EKAHAU
 Fax: 1-408-725 8405
 sales-americas@ekahau.com

East Coast Ekahau, Inc.
 1851 Alexander Bell Drive
 Suite 150
 Reston, VA 20191
 Tel: 1-866-4EKAHAU
 Fax: 1-703-860 2028
 sales-americas@ekahau.com

Europe Ekahau, Inc.
 Tallberginkatu 2
 00180 Helsinki, Finland
 Tel: +358 20 743 5910
 Fax: +358 20 743 5919
 sales-europe@ekahau.com

Asia Ekahau, Inc.
 Suite 1002
 Chuang's Tower
 30-32 Connaught Road Central
 Hong Kong
 Tel: +852 3426 4770
 Fax: +852 3426 4061
 sales-asia@ekahau.com