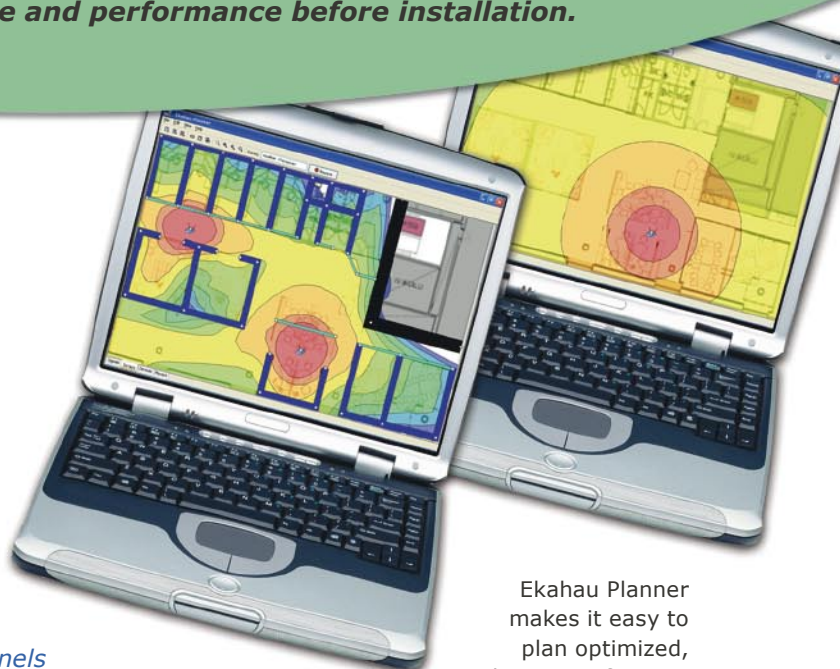


# Ekahau Planner™

**Easy-to-use software tool for off-site design of Wi-Fi networks.  
Lets you simulate network coverage and performance before installation.**

## Ekahau Planner – Key Benefits

- Accelerates Wi-Fi network design and cuts deployment cost
- Access point locations can be planned off-site, using a standard laptop PC, thus eliminating the trial-and-error process on the customer site
- All Wi-Fi performance visualizations, such as signal strength, data rate, and interference, immediately react to the walls, simulated AP locations, antenna types, power levels, and channels
- Field site survey data from the installed network, can be recorded at any time to improve the network plan
- Create work orders, proposals and network performance reports using Ekahau Reporter™ with Ekahau Planner



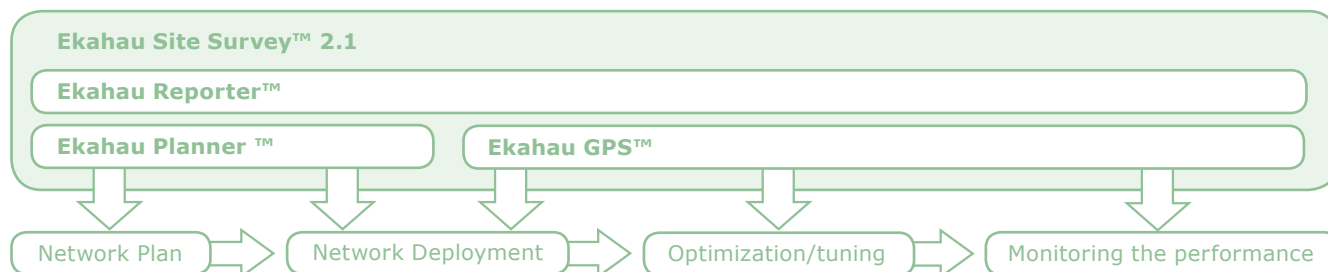
Ekahau Planner makes it easy to plan optimized, better performing Wi-Fi networks.



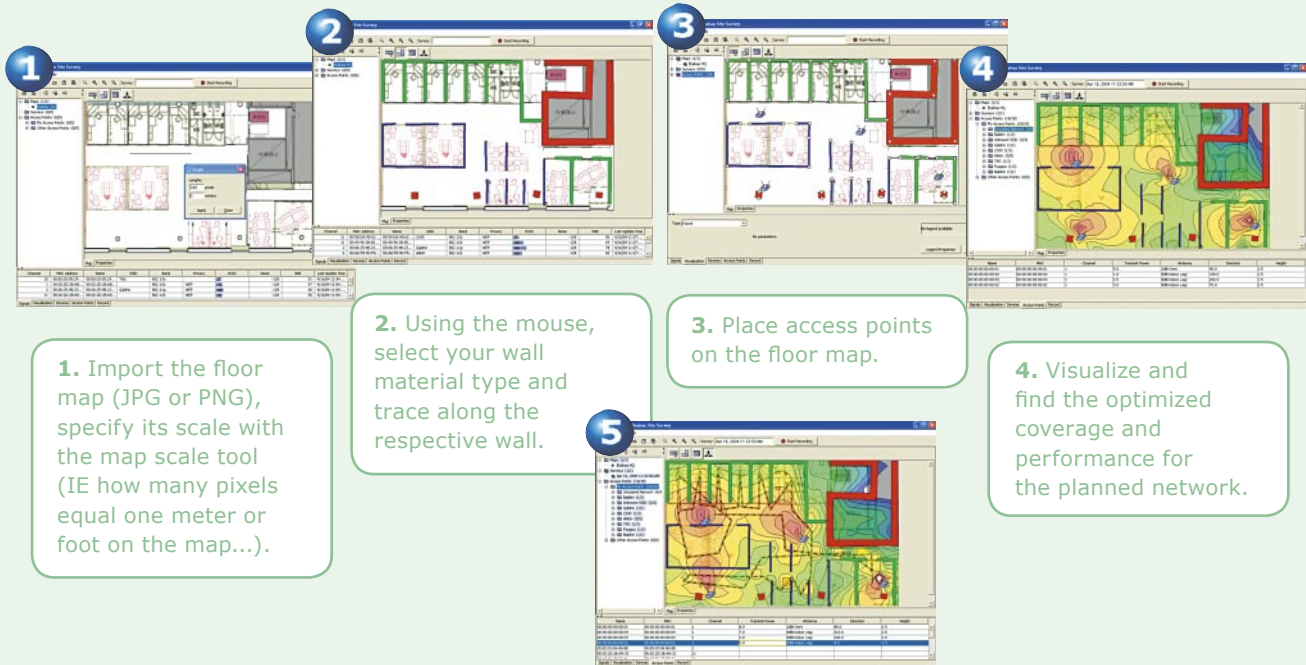
## Innovative approach to Wi-Fi design process

As a new Ekahau Site Survey software module, the Ekahau Planner presents an innovative approach that streamlines Wi-Fi network design and deployment. It can be used to intelligently simulate the initial access point placement, settings, walls, and thus predict the expected network performance, prior to installing any Wi-Fi infrastructure. An easy to use drag-and-drop GUI is included for access point and wall placement on a facility floor map. The Ekahau Planner provides real-time visualizations for displaying RF coverage and a variety of performance parameters. The software supports multiple different wall material types and antenna types for the best possible calculation of RF signal propagation.

*After installing your Wi-Fi network, the generated network plan can be easily improved and verified by recording field site survey data. Ekahau Planner also accelerates field site surveys by providing coverage and performance visualizations to network areas that are not visited during the field site survey.*



## 5-Step Design Process with Ekahau Planner:



**1.** Import the floor map (JPG or PNG), specify its scale with the map scale tool (IE how many pixels equal one meter or foot on the map...).

**2.** Using the mouse, select your wall material type and trace along the respective wall.

**3.** Place access points on the floor map.

**4.** Visualize and find the optimized coverage and performance for the planned network.

**5.** After initial installation of the Wi-Fi network, you may improve and verify your network plan by recording actual site survey data from the site by using the Ekahau Site Survey software.

## Specifications:

- *Simulated walls and wall materials:*
  - Several wall materials pre-configured
  - Manual wall material definition
- *Simulated access point characteristics:*
  - Support for directional and omni-directional antennas
  - Modify access point properties: transmit power, SSID, MAC, AP notes
- *Calculated network performance characteristics:*
  - Signal strength (coverage areas)
  - Signal-To-Noise Ratio
  - Interference
  - Data Rate
  - All visualizations immediately react to changes in simulated access points or walls

## System Requirements:

- *Ekahau Site Survey 2.1*
- *Laptop PC with at least Windows® XP or 2000 Professional, 1 GHz processor, 512 MB RAM.*
- *At least 200 MB of disk space.*
- *A supported Wi-Fi adapter (25 leading brands supported). See [www.ekahau.com/devices](http://www.ekahau.com/devices)*
- *Map image of the facility or area (JPG or PNG).*



**ekahau**

[www.ekahau.com](http://www.ekahau.com) email: [sales@ekahau.com](mailto:sales@ekahau.com) [info@ekahau.com](mailto:info@ekahau.com)

*Headquarters, West Coast:*  
 Ekahau, Inc.  
 12930 Saratoga Ave, suite B-9  
 Saratoga, CA 95070  
 Phone: 1-866-4EKAHAU  
 Fax: 1-408-725-8405  
 Email: [sales-usa@ekahau.com](mailto:sales-usa@ekahau.com)

*East Coast:*  
 Ekahau, Inc.  
 620 Herndon Parkway Suite 200  
 Herndon, VA 20170  
 Phone: 1-703-481 9861  
 Fax: 1-703-481 9834  
 Email: [sales-americas@ekahau.com](mailto:sales-americas@ekahau.com)

*Ekahau Asia*  
 Suite 1002 Chuang's Tower  
 30-32 Connaught Road Central  
 Hong Kong  
 Phone: +852 3426 4770  
 Fax: +852 3426 4061  
 Email: [sales-asia@ekahau.com](mailto:sales-asia@ekahau.com)

*Ekahau Europe*  
 Tammasaarenlaituri 3  
 00180 Helsinki  
 Finland  
 Phone: +358 20 743 5910  
 Fax: +358 20 743 5919  
 Email: [sales-europe@ekahau.com](mailto:sales-europe@ekahau.com)