



Recover  
your  
assets

# Location Made Easy

Ekahau RTLS is a quick, easy way to locate people and assets. With Ekahau RTLS, you can improve your business operations, save money and become more efficient. Once in use, Ekahau RTLS keeps key employees within easy reach and decreases the time it takes to find vital pieces of equipment or inventory. By streamlining operations, Ekahau RTLS allows you to focus your time and resources on more important details. Ekahau RTLS makes sure that people and assets can be found - in the right place, at the right time.



## Make mobility work

The mobile workplace is no longer a novelty. In today's business environment, it is an absolute requirement for improving productivity and reducing costs. Wireless networks provide the means for data and voice communications to keep up with a mobile workforce. But the need goes deeper than that. Businesses are seeking ways to more adeptly track the whereabouts of personnel, partners, and inventory. Adding a location-tracking application to existing wireless networks gives businesses a simple, automated way to stay up-to-date on the location of any tracked item.

## Ekahau RTLS

Wireless networks that are today used for data and voice provide an excellent platform for building accurate location-tracking systems. Unlike other proprietary systems, the Ekahau solution utilizes standard 802.11 wireless networks to deliver a comprehensive Real-Time Location System (RTLS) for locating your valuable assets and people. Because it uses the existing wireless network infrastructure, deployment is more cost effective. In addition, deployment of Ekahau RTLS does not interrupt network activities or affect other network communications.

With Ekahau RTLS, the position of equipment and people is automatically updated and can also be delivered to other systems and personnel requiring the same information. This enhanced information flow ensures that assets are utilized more efficiently and workflow is optimized. This enables significant cost savings. Moreover, the system also enables additional automated functions, such as directing security personnel to the location where a tag alarm button has been pressed or a tamper switch activated.

## Savings

Ekahau RTLS delivers savings by allowing businesses to lower their equipment inventory through better asset utilization as well as saving time lost searching for items and losses due to theft. Historical location information also can produce savings by allowing businesses to analyze data and optimize their business processes.

### Asset utilization

Ekahau improves asset utilization in healthcare and manufacturing by showing where critical assets are at any moment. When the exact location of equipment is known, an organization can deliver the same results with a lower equipment inventory.

### Increased Process Throughput

Ekahau removes the bottlenecks in business processes, giving improved visibility over processes whether tracking a patient in a hospital, manufacturing parts in a factory or overseeing the complete supply chain.

### Improved workflow

Ekahau optimizes employee productivity by automatically locating mobile assets and personnel with speed and accuracy.

### Safety and Security

Ekahau reduces theft by enabling accurate tracking of assets. The safety of key personnel is also ensured in such working environments as mines, hospitals and corporate offices. In times of crisis, risk is immediately minimized by providing mobile call buttons and automatic location tracking via Ekahau tags.

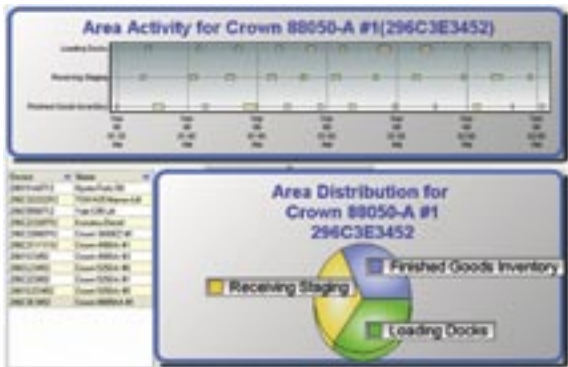


## Ekahau Applications



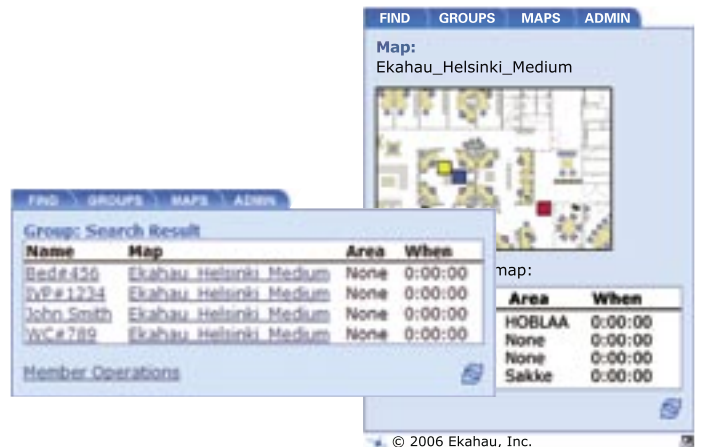
### Ekahau Tracker

Ekahau Tracker is an end-user application for tracking assets and people, turning location data into actionable information. Ekahau Tracker streamlines many business operations from the maintenance of medical equipment to alerting security personnel of a person or high value item entering a prohibited location. Ekahau Tracker logs and displays the location histories of each tracked item and creates statistical and graphical reports that can be used for reviewing executed tasks or analyzing operational efficiency.



### Ekahau Finder

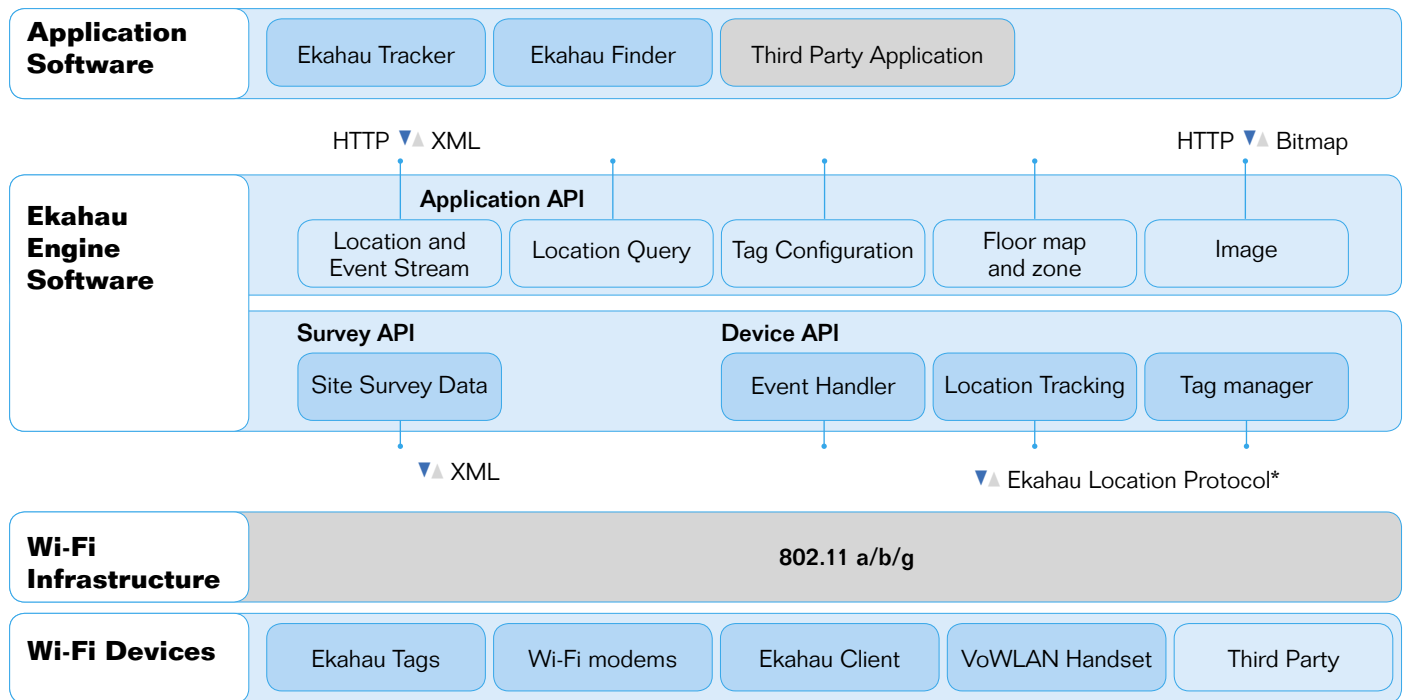
Ekahau Finder is an end-user application for instantly locating people and assets using any standard web browser. It comes with an easy-to-use user interface that allows for the group listing of devices, executing user-defined searches and remotely activating the Ekahau Tag incorporated LED and buzzer. With Ekahau Finder organizations can streamline and automate the location of people and assets that would otherwise consume valuable human resources.



### What is Ekahau RTLS?

Ekahau Real Time Location Systems (RTLS) is a fully automated system that continually monitors the location of assets or personnel on a campus area. It does this in real-time delivering information to authorized users via the corporate network through application software or application programming interfaces. RTLS typically consists of tags, reference devices for locating tags, data network, server software and end-user application software. Ekahau RTLS uses existing Wi-Fi (802.11a/b/g) standard access points as the reference devices for tag location and as the data network. Using standard Wi-Fi access points lowers the total cost of ownership of Ekahau RTLS and makes deployment straightforward compared to competing RTLS solutions that require proprietary reference devices and data networks.

## Ekahau RTLS architecture



\* Available to Located by Ekahau-partners.

## Solution components

**Ekahau RTLS** is a complete tracking solution for asset and people tracking. It consists of the following integrated components:

**Ekahau Tracker** is an end-user application for real-time tracking, dispatching alarms and analyzing the locations of assets and people.

**Ekahau Finder** is an end-user application for grouping, locating and viewing the location of people and assets in real-time.

**Ekahau Engine** is a service that runs on a dedicated Windows® server. It provides the following functional elements:

- **A Location Engine** for receiving signal strength measurements from tags, compares the measurements to an existing reference data and calculates accurate location estimates.
- **An Event Handler** for receiving events such as tag-originated call button alarms or tamper switch alerts and routing them to designated applications.
- **Systems and device management** that automate management tasks and monitor the system through a web-based user interface.
- **Open application APIs** for integrating 3rd party applications to the system. These provide location feeds, location queries and events to the application using industry-compliant standards.
- **Ekahau Location Survey** for recording reference data during the deployment phase.

**802.11 Wi-Fi access points** are used as reference points for locating tags and as the communication link between tags and the Ekahau Engine.

**Tags** are small battery-operated devices that are attached to tracked objects. They measure signal strengths from access points to the tags, and transmit the measurements through an 802.11 network to the Ekahau Engine in real-time.

**Ekahau Client** is a software agent that can be used to location-enable wireless devices. It works similarly as Tags but runs in the background on existing PDAs, Tablet PCs or laptops.



www.ekahau.com  
sales@ekahau.com  
info@ekahau.com

**West Coast** 12930 Saratoga Avenue, suite B-8  
Saratoga, CA 95070  
Tel: 1-866-4EKAHAU  
Fax: 1-866-435 2428  
sales-americas@ekahau.com

**East Coast** 1851 Alexander Bell Drive  
Suite 150  
Reston, VA 20191  
Tel: 1-866-4EKAHAU  
Fax: 1-703-860-2028  
sales-americas@ekahau.com

**Europe** Tallberginkatu 2  
00180 Helsinki, Finland  
Tel: +358-20-743 5910  
Fax: +358-20-743 5919  
sales-europe@ekahau.com

**Asia** Suite 1002, Chuang's Tower  
30-32 Connaught Road Central  
Hong Kong  
Tel: +852 3426 4770  
Fax: +852 3426 4061  
sales-asia@ekahau.com

© 2000-2006 Ekahau, Inc. All rights reserved. Ekahau™, Ekahau Positioning Engine™, Ekahau Site Survey™, Ekahau T201™, Ekahau T301™, Ekahau Finder™ and the Ekahau logo are trademarks or registered trademarks of Ekahau. Other product and company names may be trademarks or trade names of their respective owners.